



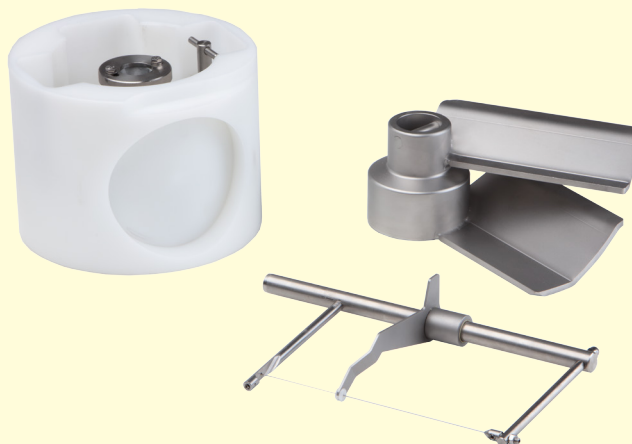
# Known for Reliability Since 1921

**NEW  
F1000N**

The BIRO F1000N, Food/Patty Forming Machine was designed as an entry level machine for any size business. This NEW machine can deliver up to 1,300 cycles per hour. Featuring a ½ HP (.37Kw) motor for single speed operation. The machine also comes standard with a Stainless Steel Feed Paddle, a 22 pound (4.2 Gal.) hopper capacity, and an Auto-feed patty paper attachment with sample paper. The key feature of the F1000N is the compact footprint and ease of cleaning. Disassembly of the machine for cleaning is done all by hand, no tools required.



The drum mold die in the drum allows the operator to select product weights by changing the drum die depth (thickness) up to 1¼" (32 mm). You do not need different die cups, plates or tools each time you want to change weights. A large number of drum mold die shapes are available. They vary from the standard round shapes of different diameters, to special shapes such as square, oval, rectangle, fish, cutlet, heart, chicken leg, chicken nuggets, rabbit, bone, tree, pork chop, etc. See back side or call factory for more information.



# F1000N

# MODEL SPECIFICATIONS

**Model:** F1000N FOOD/PATTY FORMER

**Motor:**

HP	VOLTS	AMPS	HERTZ	PH	STATUS
½	115	3.0	60	1	STD

**Construction:** Stainless steel body, hopper, hopper cover.

**Drum Mold:** White Poly - Select one, Standard Single Round Hole Mold Drum (at no charge) from the selection below, Additional Standard or Non-Standard drum molds available at Extra Charge. *Contact factory for more drum options. Note: Maximum product thickness of 5.12" (130mm) diameter hole drum is .79" (20mm) thick.*

**Hopper Capacity:** 4.2 Gallons – 16 Liters (Approximately 22 pounds.)

**Machine Output:** Depending on product type, product temperature, and drum selection.




Approximately 1300 cycles per hour with single cavity drum.

Approximately 2600 cycles per hour with double cavity drum.

**Standard Features:** Operating/Service manual • Drum & Hopper Cover, Safety Switches • Fixed Speed • Stainless Steel Feed Paddle • 15 ⅜" (390.5 mm) Conveyor Belt • Manual Wire Cleaner • 1- Single round hole drum, white poly (See Drum Mold below) • Auto-feed Paper Attachment (*accepts up to 5½" (139.7 mm) square paper, two packs included with machine. Approximately 1330 sheets.*) • Disassembly for cleaning without tools.

**Options (Extra Cost):** 220-60-3 • Longer Conveyor Belt Assembly • Additional Patty paper • Second Drum

**Certifications:** N.S.F., E.T.L.(Pending)

Drum Mold Selection			
<b>Standard</b> -Select One Single Round Hole Mold (DIA.)			
F9320000-70	2.76"	70mm	F9320000-110 4.33" 110mm
F9320000-90	3.54"	90mm	F9320000-115 4.53" 115mm
F9320000-100	3.94"	100mm	F9320000-120 4.72" 120mm
	F9320000-127	5.00"	127mm
Non - Standard / Optional			
 Single Round Hole Mold - EC	Square Single Hole - EC		
F9320000-130 5.12" 130mm	F9320000-3-100100 100mm x 100mm 3.94" x 3.94"		
 Round Double Hole - EC	Rectangle Single Hole - EC		
F9320002-8-50 1.97" 50mm	F9320000-7-10070 100mm x 70mm 3.94" x 2.76"		
 Double Rectangle Hole - EC	Oval Single Hole - EC		
F9320002-2-9030 90mm x 30mm 3.54" x 1.18"	F9320000-1-10070 100mm x 70mm 3.94" x 2.76"		
	F9320000-1-12080 120mm x 80mm 4.72" x 3.15"		
<b>Ask about other Shapes and Sizes not shown.</b>	<b>EC = Extra Cost</b>		



Specialty drums available.  
Contact Biro Manufacturing for details.

### Dimensions & Weight:

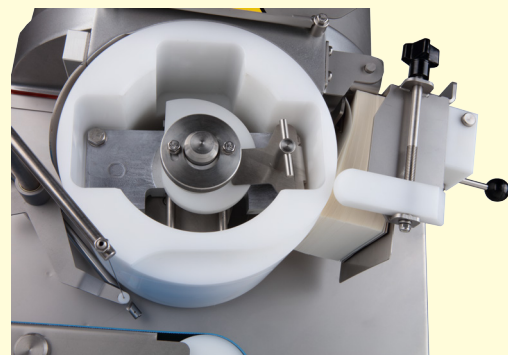
Models:	F1000N
Dims. (Std. Conv.)	L22.8" (579mm) x W20.5" (519mm) x H23.3" (592mm)
Weight	126 lbs (57 kg)
Shipping Weight	168 lbs (76.2 kg) Approx.
Wood Box Dims.	L30" (762mm) x W27" (686mm) x H29" (737mm)

**BIRO MANUFACTURING COMPANY**  
1114 WEST MAIN STREET

MARBLEHEAD, OH 43440-2099 U.S.A.

Phone: (419) 798-4451 <http://www.birosaw.com>

Fax: (419)798-9106 [sales@birosaw.com](mailto:sales@birosaw.com)



SHOWN

Product thickness adjustment cam,  
Auto-feed paper attachment.